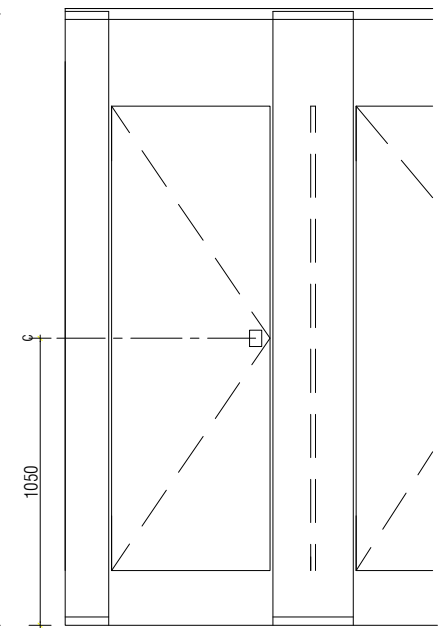
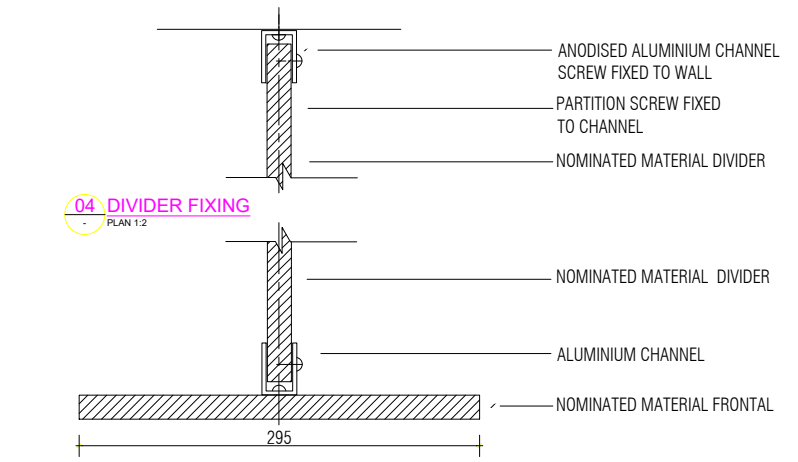


02 ELEVATION  
1:10

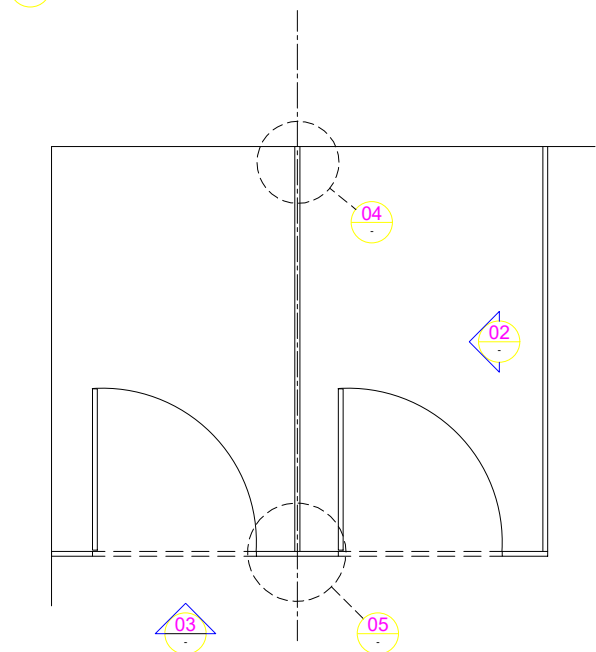


03 ELEVATION  
1:10

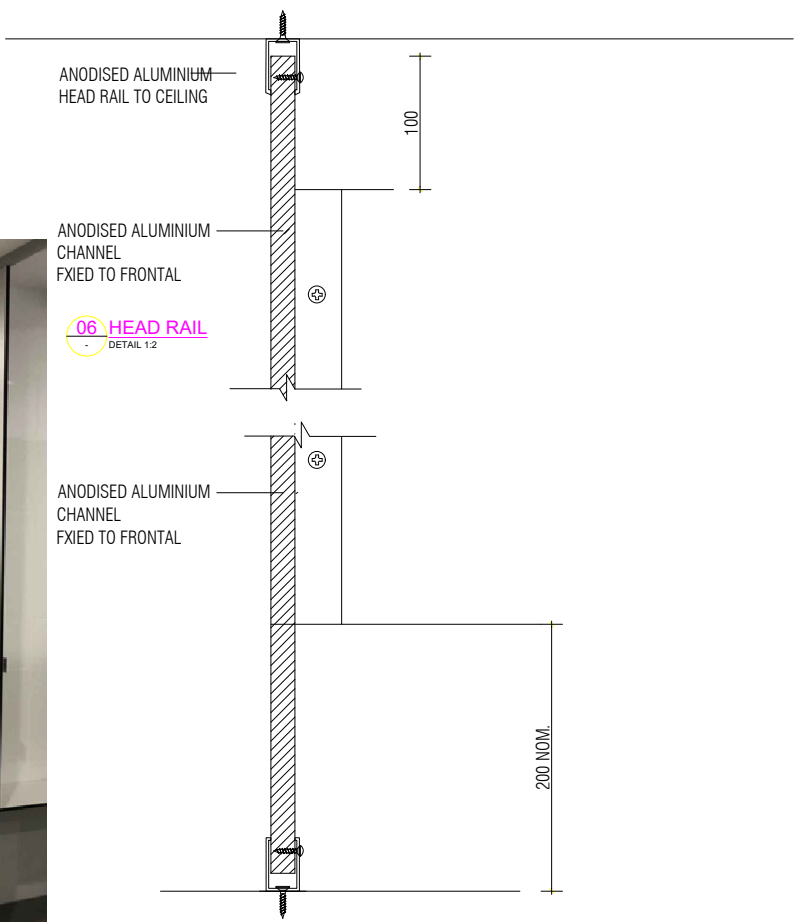


04 DIVIDER FIXING  
PLAN 1:2

05 FRONTAL FIXING  
PLAN 1:2



01 PLAN  
1:10



06 HEAD RAIL  
DETAIL 1:2

07 FLOOR LEG  
SECTION 1:2

ISSUE	REVISION	DATE	APPD
XX	X	XX.XX.XX	XX

**KIRKBUILD**  
Kirkbuild Commercial Joinery Pty Ltd

Shed3B, 160 Toongarra Rd  
Wulkuraka QLD 4305

Ph: (07) 3496 7900  
admin@kirkbuild.com.au  
www.kirkbuild.com.au

**JOB DESCRIPTION**  
Kirkbuild Flinders (FTC)

**DRAWING DESCRIPTION**  
Overhead Braced Floor Mounted to Ceiling Partition System Nominated Material

**SCALE (AT A1)**  
As Shown

**DATE**  
Oct 21

**DRAWING NO.**  
Flinders

**ISSUE**  
01

DO NOT SCALE DRAWING. VERIFY ALL DIMENSIONS AND LEVELS ON SITE